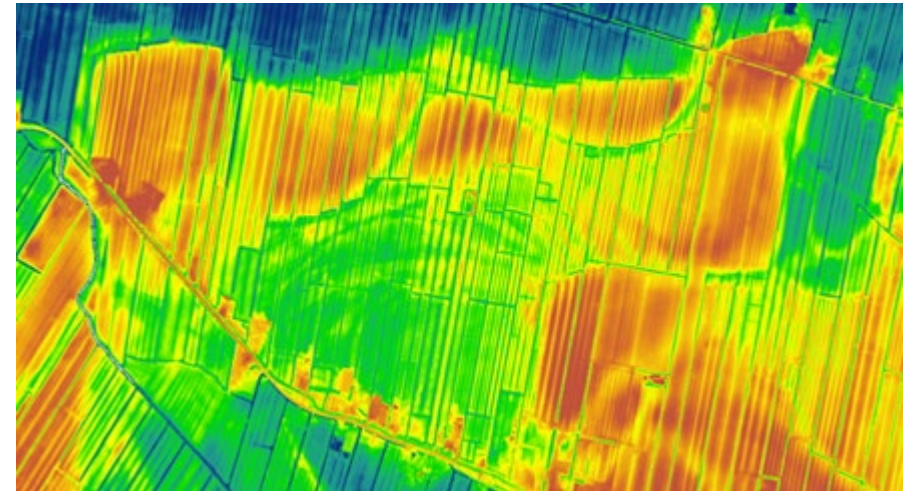


VIA TRAIECTINA CONNECTING RIJNENBURG TO UTRECHT, LIKE THE ROMANS DID



Our proposal revolving historical participation relates also to the tramway that's going to connect Rijnenburg to Utrecht, a line that, although brand new, has ancient roots.

Waterways connected the settlement in Rijnenburg to Utrecht bringing goods and people to the larger city, on the limes line that as we know now wasn't a militarized border but a series of civilian settlements where life wasn't at all dictated by constant war, like Rijnenburg.



LiDAR altimetry: the Current Elevation Model of the Netherlands clearly shows the former river course and the higher 'residential islands'



The proposed idea follows already existing examples of cultural integration with infrastructure, like that of the Rome subway station of San Giovanni (Metro C), where artifacts found there have been displayed in all their glory with large plaques that give historical context to the findings: in this case, the findings went across many ages, and the plaques explain very well the different evolutions that area went through across millennia.

The aims of such a proposal aren't limited to the idea that this would help with remembering and preserving the great wealth of historically relevant artifacts present in Rijnenburg but also with creating a stronger sense of community by helping people see firsthand that their own routine isn't so far off from that of the people that lived in the same place in the roman period, made of work, connection with Utrecht, and leisure: we often forget that humans are just the same animal put in wildly different societal situations, and the people in the past are just like us in the way they went on with their lives.

